



Océ PostScript 2 Driver

Installation Guide





Océ-Technologies B.V.

Trademarks

Products in this manual are referred to by their trade names. In most, if not all cases, these designations are claimed as trademarks or registered trademarks of their respective companies.

The LZW algorithm of the PostScript option is published under US patent no. 4.558.302 and foreign counterparts.

Copyright

Océ-Technologies B.V. Venlo, The Netherlands © 2004

All rights reserved. No part of this work may be reproduced, copied, adapted, or transmitted in any form or by any means without written permission from Océ.

Océ-Technologies B.V. makes no representation or warranties with respect to the contents hereof and specifically disclaims any implied warranties of merchantability or fitness for any particular purpose.

Further, Océ-Technologies B.V. reserves the right to revise this publication and to make changes from time to time in the content hereof without obligation to notify any person of such revision or changes.

Contents

Introduction	5
What is Océ PostScript 2?	5
For which Océ printers?	5
Installation under Windows platform	6
Get the printer installation files	6
Install an Océ printer using PostScript 2 on a Windows 98 / Me workstation	7
Install an Océ printer using PostScript 2 on a Windows NT 4.0 workstation	9
Install an Océ printer using PostScript 2 on a Windows 2000 / XP workstation	11
Installation on a Macintosh	13
Using the appropriate driver	13
Install PostScript 2 on a Mac OS 9	13
Install PostScript 2 on a Mac OS X	19
Set up your printer	24
Printer fonts	25
Un-installation	26

Océ PostScript 2 Driver

This manual is an introduction to the Océ PostScript 2 Driver. It provides the procedures to install it on a Windows 98 / Me, Windows NT 4.0 or Windows 2000 / XP workstation, or on an Apple Macintosh (Mac OS 9 to X), setting up your printer and fonts.

We recommend that you regularly visit our Web site (<http://www.oce.com>) and consult the 'Drivers, Downloads and Support' section for the most up-to-date version of the driver covered in this manual.



Introduction

This installation manual guides you through the installation of PostScript 2 driver for Océ printers. Once you have successfully installed the files, see the online Help for a full explanation of how to use the options and dialog boxes.

What is Océ PostScript 2 Driver?

The Océ PostScript 2 Driver can be used from any Windows or Apple Macintosh application to print on your Océ 5200, Océ 5250, Océ 9300, Océ 9400, Océ 9400-II, and Océ 9600 Series printers. It supports the PostScript printer description language described in the Adobe Systems Incorporated PostScript Language Reference Manual.

This enables your printer to become a true wide format printer, producing monochrome or color posters from Illustrator, Excel, Word, Write, etc. as well as CAD or electronic design applications, among others.

The versatility of PostScript is well known, particularly if you frequently use graphics applications. Many applications on numerous platforms are capable of sending data to printers in PostScript format. The PostScript language is designed to be device independent. This means that your PostScript document should print on any PostScript printer and the output should look the same.

Normally, you will never see any of the PostScript code. Everything that goes on inside your computer and the printer is hidden. The printer driver takes care of translating the application's internal data into PostScript, and it also makes sure you can select printer features in a simple way.

Your printer will recognize a PostScript file, using the in-built automatic language sensing feature.

For which Océ printers?

You can install PostScript 2 for the following Océ printers:

- Océ 5200 and Océ 5250 color inkjet printers,
- Océ 9300, Océ 9400, Océ 9400 II and Océ 9600 black & white printers.

Installation under Windows platform

Note: *You will need the Microsoft Windows system CD-ROM during the installation of the PostScript driver.*

Note: *You need the Administrator rights on the computer to install the driver.*

The installation process is divided into three steps:

- 1 Get the installation files (from the Océ website or the Océ Drivers Pack).
- 2 Install the printer files.
- 3 Set up the Océ Printer.

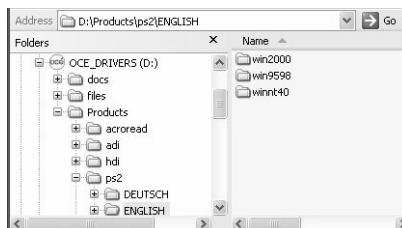
Get the printer installation files

▼ Get the driver installation files from the Océ website

- 1 On the www.oce.com international website go to the 'Drivers, Downloads and Support' section.
- 2 Select your printer and the PostScript 2 driver.
- 3 Save on your local disk the .exe file according to the language and OS needed (e.g. `oce_ps2_1xx_EN_Win.exe` for the English version of the driver).
- 4 Double click on the exe file to create an OCEPS2 folder containing the folders:
 - win9598
 - winnt40
 - win2000

▼ Get the installation files from the Océ Drivers Pack CD-ROM

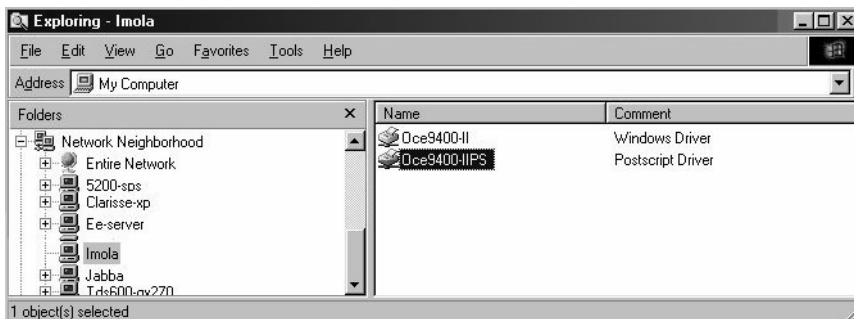
- 1 Explore the CD-ROM to the 'Products' folder.
- 2 Click on 'PS2'.
- 3 Select your language.
- 4 Select the OS needed.



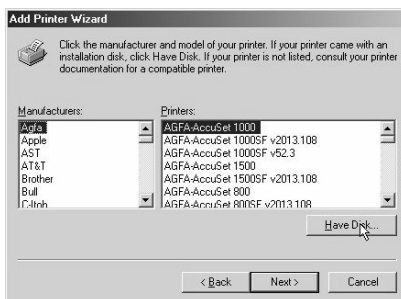
Install an Océ printer using PostScript 2 on a Windows 98 / Me workstation

▼ Proceed as follows to install the driver under Windows 98 or Me

- 1 On the Network Neighborhood, browse for the printer you want to install (Océ 9400 II named 'Imola', in the example below).
- 2 Double click on the printer to install.
- 3 Double click on '9400 II PostScript' driver.

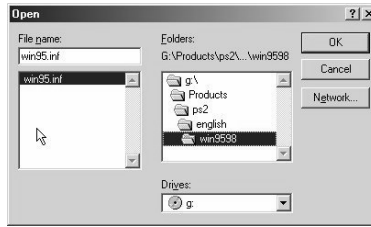


- 4 You are prompted to set up the printer. Click 'Yes' to launch the 'Add Printer Wizard'.
- 5 Click 'Next'.
- 6 Click on 'Have disk...' to access the driver installation files:

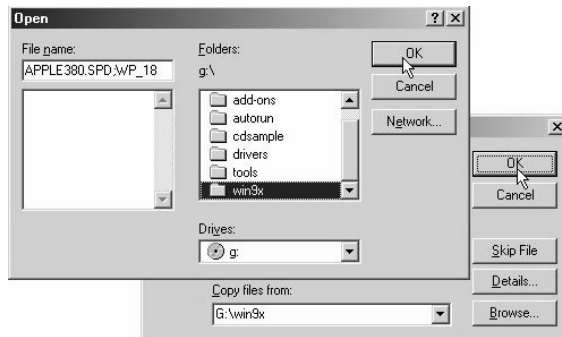


- 7 Browse to the PS2 folder containing the win9598 folder in the requested language (downloaded from the Océ website or found on the Océ Drivers Pack CD-ROM).

- 8 Open the win95.inf file:



- 9 Click on OK, then OK again.
- 10 Select your printer model.
- 11 Follow instructions on the screen to finish the configuration.
- Note:** You can be prompted to provide some files not found by the system.
Insert the Windows System CD-ROM to copy these files:



Once the installation is finished, your configuration is ready to print.

Install an Océ printer using PostScript 2 on a Windows NT 4.0 workstation

Note: You will need the Microsoft Windows NT 4.0 package during the installation of the PostScript driver.

Also, you will need NT Service pack number 6 or higher for correct operation of the driver.

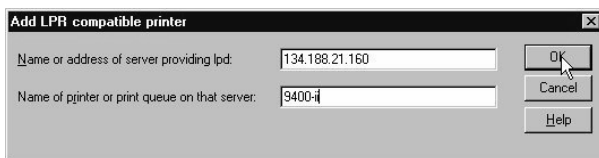


Proceed as follows to install the driver under Windows NT 4.0

- 1 Log on as System Administrator.
- 2 Go to 'Start' menu.
- 3 Select 'Settings'.
- 4 Select 'Printers'.
- 5 Select 'Add Printer' to launch the 'Add Printer Wizard'.
- 6 Select the installation on your computer and click 'Next'.
- 7 Create a new port clicking on 'Add Port...':

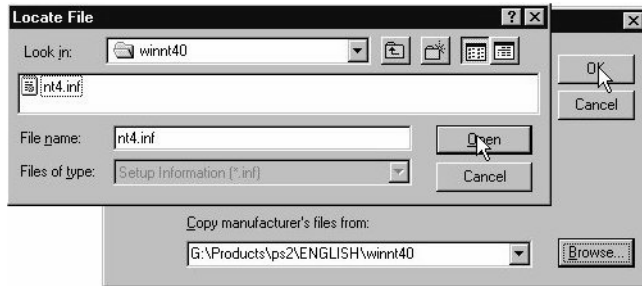


- 8 Choose an 'LPR port' and create the new port.
- 9 Configure the port and validate:



- 10 In the window that lists all the manufacturers and printers, click the 'Have Disk...' button.
- 11 Browse to the PS2 folder containing the winnt40 folder in the requested language (downloaded from the Océ website or found on the Océ Drivers Pack CD-ROM).

12 Open the nt4.inf file:

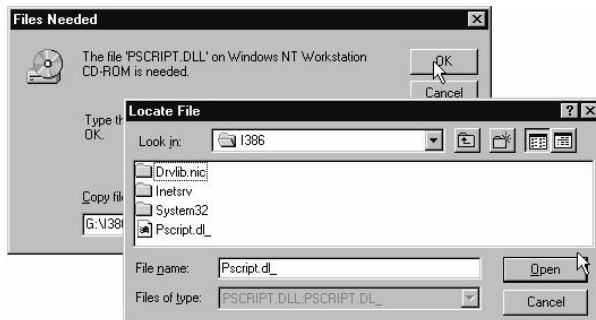


13 Select your printer model.

14 Click on OK.

15 Follow instructions on the screen to finish the configuration (Do not share the printer as you are installing it on a workstation).

Note: *You can be prompted to provide some files not found by the system. Insert the Windows System CD-ROM to copy these files:*

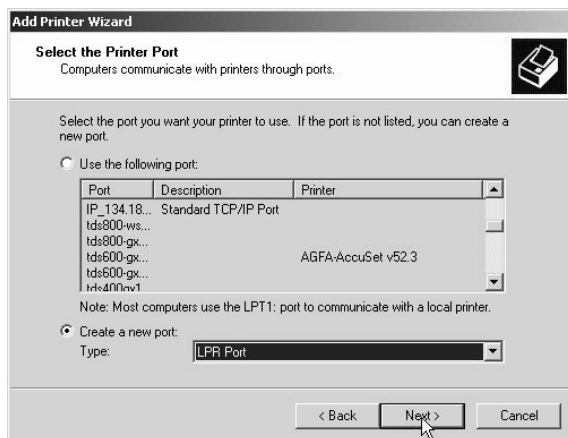


Once the installation is finished, your configuration is ready to print.

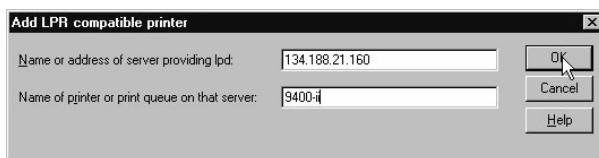
Install an Océ printer using PostScript 2 on a Windows 2000 / XP workstation

▼ Proceed as follows to install the driver under Windows NT 4.0

- 1 Log on as System Administrator.
- 2 Go to 'Start' menu.
- 3 Select 'Settings'.
- 4 Select 'Printers (and faxes)'.
- 5 Select 'Add Printer' to launch the 'Add Printer Wizard'.
- 6 Create a new LPR port:

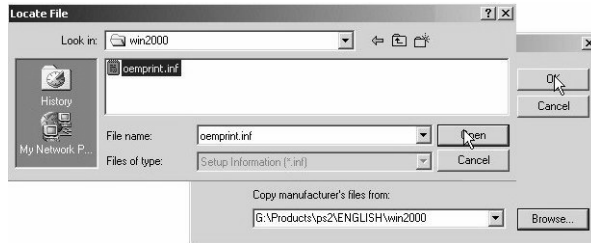


- 7 Configure the port and validate:



- 8 In the window that lists all the manufacturers and printers, click the 'Have Disk...' button.
- 9 Browse to the PS2 folder containing the win2000 folder in the requested language (downloaded from the Océ website or found on the Océ Drivers Pack CD-ROM).

- 10 Open the oemprint.inf file:



- 11 Select your printer model.
- 12 Click on OK.
- 13 Follow instructions on the screen to finish the configuration (Do not share the printer as you are installing it on a workstation).
Note: *If an error message is displayed about a 'Digital Signature not found', ignore it and continue the installation.*
Once the installation is finished, your configuration is ready to print.

Installation on a Macintosh

Using the appropriate driver

You are recommended to use System 9.x or later.

On a Macintosh system, the connection is done using the TCP/IP protocol.

The installation process is divided into three steps:

- Get the printer PPD files (from the Océ website or the Océ Drivers Pack).
- Install the printer PPDs.
- Set up the Océ Printer.

Note: *TCP/IP protocol must be installed and set up before executing the following procedure.*

Install PostScript 2 on a Mac OS 9

Macintosh operating system 9 now provides the possibility to connect a printer by using standard TCP/IP LPR Protocol.

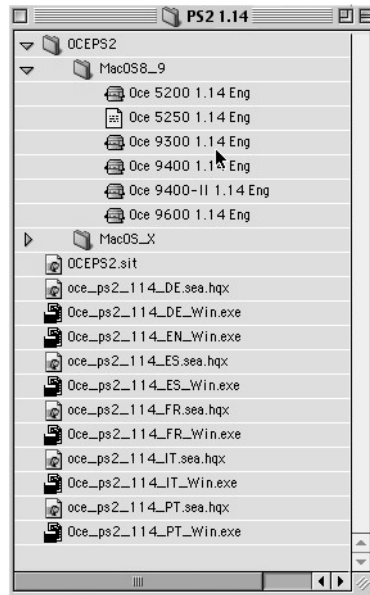
This feature is absolutely mandatory for connecting the following Océ Printers:

- Océ 5200 (with PostScript option)
- Océ 5250 (with PostScript option)
- Océ 9300
- Océ 9400
- Océ 9400-II (with PostScript option)
- Océ 9600 (with PostScript option)



Get the PPD files from the Océ website

- 1 On the www.oke.com international website go to the 'Drivers, Downloads and Support' section.
- 2 Select your printer and the PostScript 2 driver.
- 3 Save on your local disk the .hqx file according to the language needed (e.g. oce_ps2_1xx_EN.sea.hqx for the English version of the driver).
- 4 Double click on the hqx file to create an OCEPS2 folder containing the folders:
 - MacOS8_9
 - MacOS_X

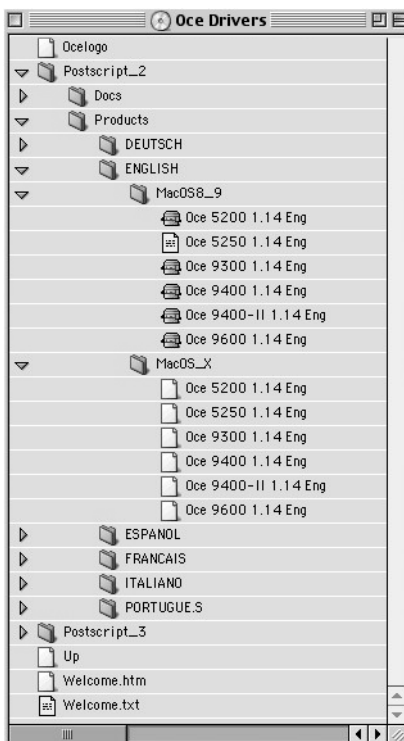


[1] PS2 folder get from the Océ website



Get the PPD files from the Océ Drivers Pack CD-ROM

- 1 Browse the CD-ROM to the PostScript_2 folder.
- 2 Click on 'Products'.
- 3 Select your language.
- 4 Open the MacOS8_9 folder to access the PPD files linked to the printers:



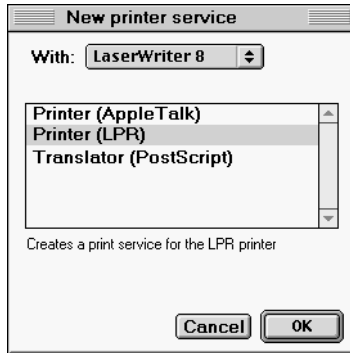
[2] PS2 folder on the Océ Drivers Pack CD-ROM



Printer installation

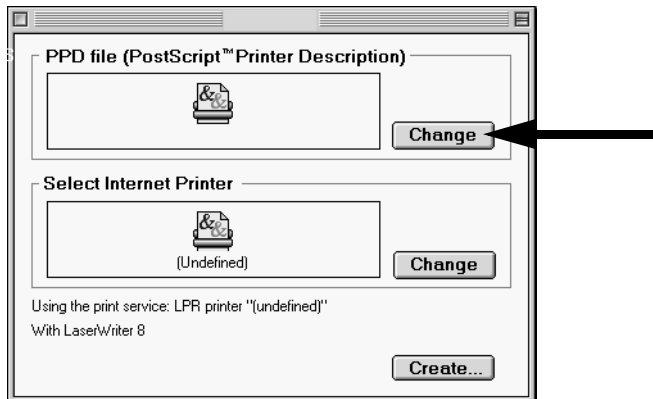
- 1 From MacOS8_9 folder, copy the PPD file corresponding to your printer.
- 2 Paste it into the 'System/ Extensions/ Printers description' folder.
- 3 Open 'Desktop Printer Utility'.

You get the following window:

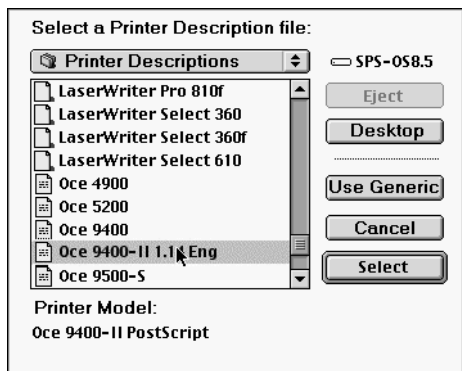


[3] New printer service window

- 4 Select 'Printer (LPR)'.
- 5 Click on OK.
- 6 Start the PPD selection by clicking on the first 'Change' button.



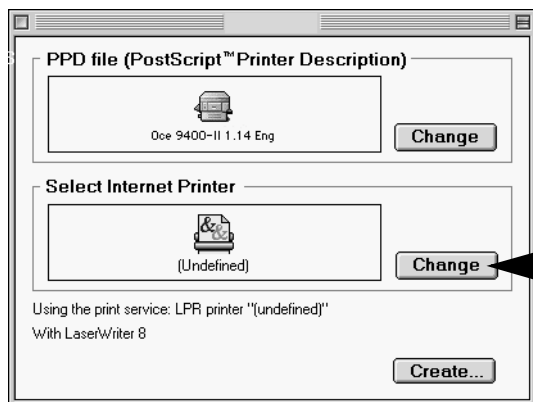
- 7 Now select the appropriate PPD for your printer (for example: Océ 9400-II).



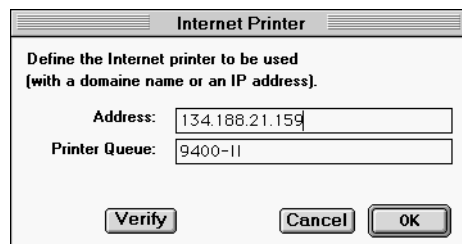
[4] PPD file selection window

- 8 Click on 'Select'.

The previous window is displayed again:

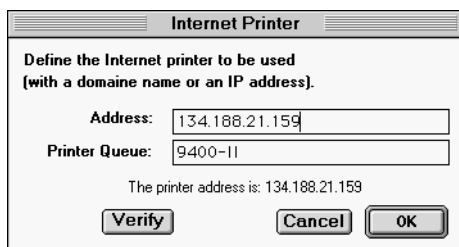


- 9 Start the printer selection by clicking on the second 'Change' button. You now get the LPR printer settings.
- 10 Fill in the IP printer address & printer destination:

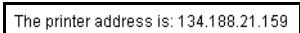


[5] Example of printer address

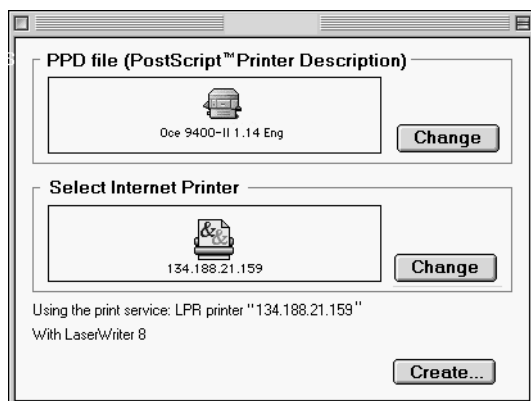
- 11 Verify the connection by clicking on the ‘Verify’ button.



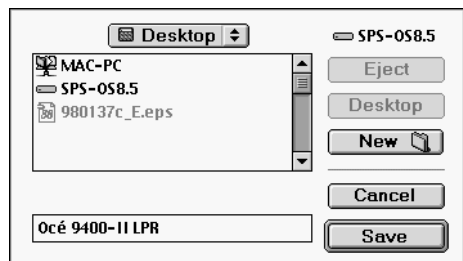
If both IP printer & printer destination are found, a message is displayed within the window:



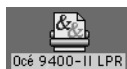
- 12 Click on the OK button after the verification has been performed correctly. You are now back to the main window:



- 13 Click on the ‘Create’ button to create the printer resource. The printer resource name is now required.



- 14 Enter the desired name and click on 'Save'.
The printer resource is now available on your desktop.



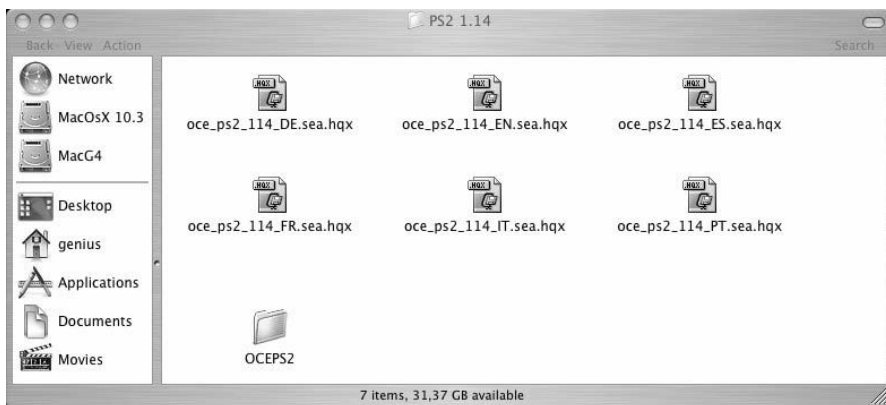
Install PostScript 2 on a Mac OS X

This procedure describes the installation on the Mac OS X (10.3 and higher).



Get the PPD files from the Océ website

- 1 On the www.océ.com international website go to the 'Drivers, Downloads and Support' section.
- 2 Select your printer and the PostScript 2 driver.
- 3 Save on your local disk the .hqx file according to the language needed (e.g. `oce_ps2_1xx_EN.sea.hqx` for the English version of the driver).

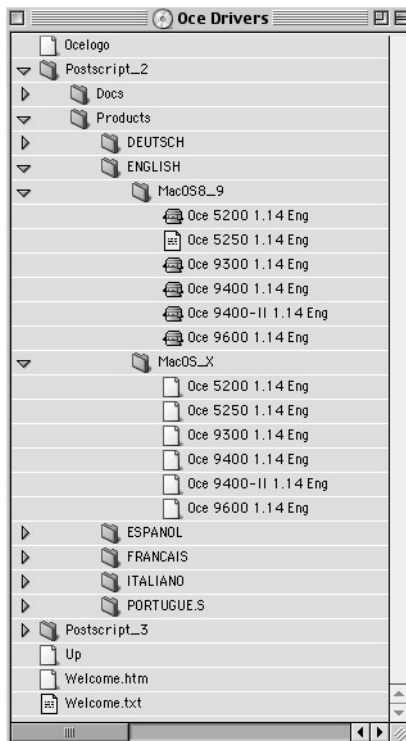


- 4 Double click on the hqx file to create an OCEPS2 folder containing the folders:
 - MacOS8_9
 - MacOS_X.



Get the PPD files from the Océ Drivers Pack CD-ROM

- 1 Browse the CD-ROM to the PostScript_2 folder.
- 2 Click on 'Products'.
- 3 Select your language.
- 4 Open the MacOS_X folder to access the PPD files linked to the printers:

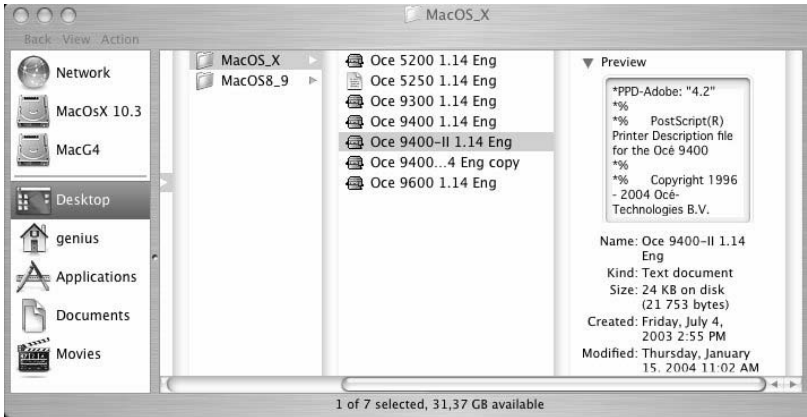


PS2 folder on the Océ Drivers Pack CD-ROM

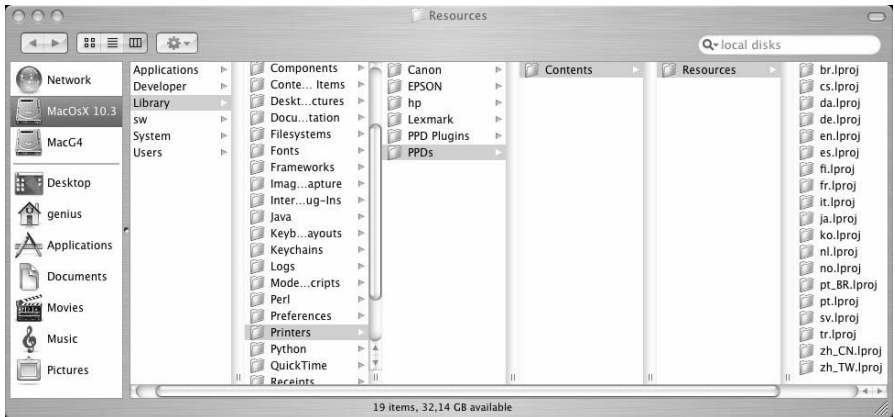


Install the printer PPDs

- 1 Open the 'MacOS_X' folder.



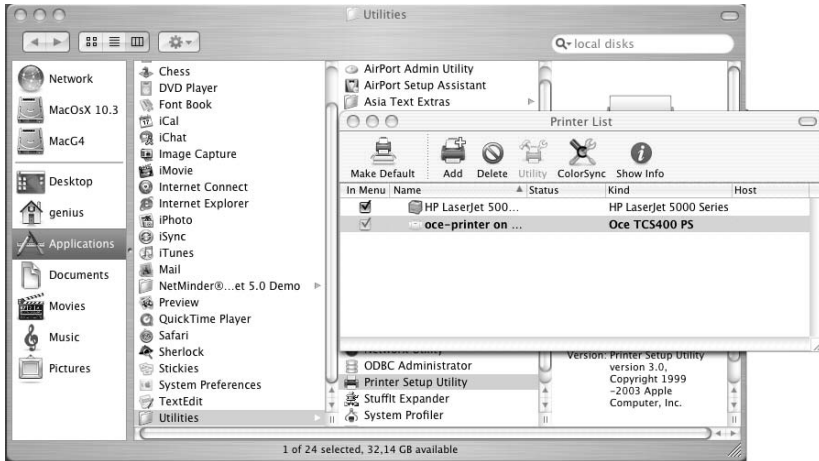
- 2 Select the PPD (PostScript printer description) file according to your printer type and copy it in the '[System_Disk]/Library/Printers/PPDs/Contents/Resources/[language].lproj' folder (e.g. copy the English .ppd file on the 'en.lproj' folder to install the driver in English).



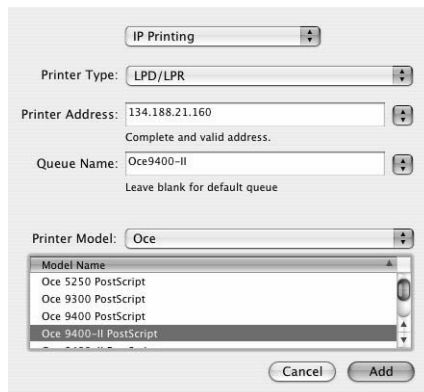
Setup the Océ printer

Install the printer

- 1 In the 'Finder', open 'Applications' and 'Utilities'.
- 2 Double click on the 'Printer Setup Utility' application to open the 'Printer List' window:



- 3 Click 'Add' to access the configuration window. The application loads the drivers.
- 4 Select 'IP Printing'.
- 5 In 'Printer Type', select 'LPD/LPR'.
- 6 Enter the printer address (Contact your network administrator).
- 7 Enter a queue name (e.g. 'Océ_printer' or 'Océ9400-II').
- 8 In 'Printer Model', select 'Océ' and choose your printer model.
- 9 Click 'Add', the printer appears in the list:



Note: *The last printer installed is automatically defined as the default one.*



Configure the printer

- 1** Select the printer in the 'Printer List'.
- 2** From the menu, open 'Printers/Show Info'.
- 3** Configure the 'Name & Location', the 'Printer Model' and the 'Installable Options' (rolls, sheet feeders, copy delivery tray, folder, belt unit...) according to your printer features.
- 4** Click the 'Apply Changes' button to validate.

Note: *For an easier access to your printer, you can create a shortcut on your desktop: from the 'Printers' menu, use the 'Create Desktop Printer' function.*

Set up your printer

Some parameters, such as PostScript data format, page layout and default page size will need to be set up on your printer control panel.

Please refer to your printer User's Manual.

Printer fonts

The following 35 fonts are available in your printer when the PostScript option is installed:

Avant Garde-Book
Avant Garde-BookOblique
Avant Garde-Demi
Avant Garde-DemiOblique
Bookman-Demi
Bookman-DemiItalic
Bookman-Light
Bookman-LightItalic
Courier
Courier-Bold
Courier-BoldOblique
Courier-Oblique
Helvetica
Helvetica-Bold
Helvetica-BoldOblique
Helvetica-Narrow
Helvetica-Narrow-Bold
Helvetica-Narrow-BoldOblique
Helvetica-Narrow-Oblique
Helvetica-Oblique
NewCenturySchlbk-Bold
NewCenturySchlbk-BoldItalic
NewCenturySchlbk-Italic
NewCenturySchlbk-Roman
Palatino-Bold
Palatino-BoldItalic
Palatino-Italic
Palatino-Roman
Symbol Symbol
Times-Bold
Times-BoldItalic
Times-Italic
Times-Roman
ZapfChancery-MediumItalic
⌘ ☐ ♣ ⚡ ⬛ ⚙ ⚙ ▼ ▲ ZapfDingbats

Un-installation

▼ Un-installation on Windows

- 1 Go to 'Start'.
- 2 Select 'Settings'.
- 3 Select 'Printers'.
- 4 Select the printer you want to remove.
- 5 Go to 'File' menu.
- 6 Click on 'Delete'.
- 7 Click on 'Yes'.